



233 Marine Road Central,
Morecambe, LA4 4BQ

233, Marine Road Central, Morecambe

The property at a glance

10  5  5 

- Commercial Property & Seperate Maisonette/ Living Accomodation
- Investment Opportunity.
- Bursting With Potential
- CEPC Rating: TBC
- Spectacular Sea Views



Get in touch today

01524 401402
info@gfproperty.co.uk
gfproperty.co.uk

£495,000

Get to know the property



A SUBSTANTIAL COMMERCIAL OPPORTUNITY IN A PRIME LOCATION WITH ADDITIONAL TWO BED MAISONETTE WITH SPACIOUS LIVING ACCOMODATION.

Nestled in the heart of Morecambe, this expansive commercial property on Marine Road West boasts a substantial commercial space spread over four floors, including a spacious multiroom basement, this property offers a whopping approximate 8792 sqft of floor place. Furthermore, the property boasts a two bedroom maisonette

The prime location of this property provides stunning views overlooking the picturesque Morecambe Bay, making it a truly unique find. Whether you're looking to set up a new business venture or expand an existing one, this property is suitable for a variety of commercial uses, limited only by your imagination.

To truly grasp the full potential of this property, viewings are highly recommended. Don't miss out on the opportunity to own a piece of Morecambe's charm and make your mark in this vibrant seaside town.





Ground Floor

Vestibule

1.60m x 1.09m (5'3" x 3'7")

Two hardwood entrance doors, door to meter storage and hardwood single glazed door to hallway.

Hallway

3.23m x 3.05m (10'7" x 10')

Stairs to first floor.

First Floor

Landing

2.95m x 1.37m (9'8" x 4'6")

Smoke detector, stairs to second floor and door to reception room one.

Reception Room One

6.10m x 4.93m (20' x 16'2")

Single glazed hardwood windows, smoke detector, integrated ceiling speakers and door to hallway.

Hallway

8.00m x 3.56m (26'3" x 11'8")

Integrated ceiling speakers, wall and base unit, stainless steel sink with mixer tap and doors to 5 reception rooms, server room and WC.

Reception Room Two

5.51m x 4.32m (18'1" x 14'2")

Single glazed hardwood windows and smoke detector.

Reception Room Three

4.09m x 3.66m (13'5" x 12')

Single glazed hardwood windows and smoke detector.

Reception Room Four

3.38m x 2.41m (11'1" x 7'11")

Single glazed hardwood windows and smoke detector.

Reception Room Five

3.40m x 2.51m (11'2" x 8'3")

UPVC double glazed window and laminate worktop.

Reception Room Six

7.01m x 5.79m (23' x 19')

UPVC double glazed window, hardwood single glazed windows, storage cupboard and door to stairs to lower ground floor.

Server Room

2.77m x 0.99m (9'1" x 3'3")

W C

2.97m x 2.77m (9'9" x 9'1")

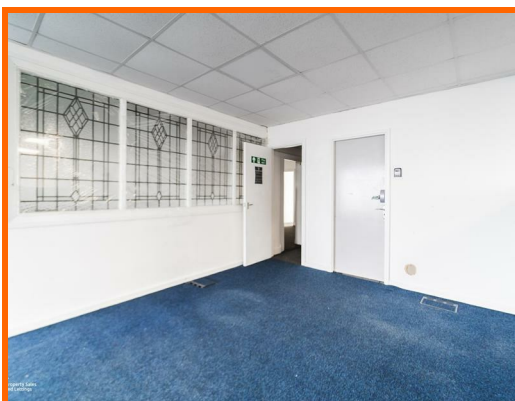
UPVC double glazed frosted window, two low level WC's in separate cubicles, two pedestal wash basins and laminae flooring.

Second Floor

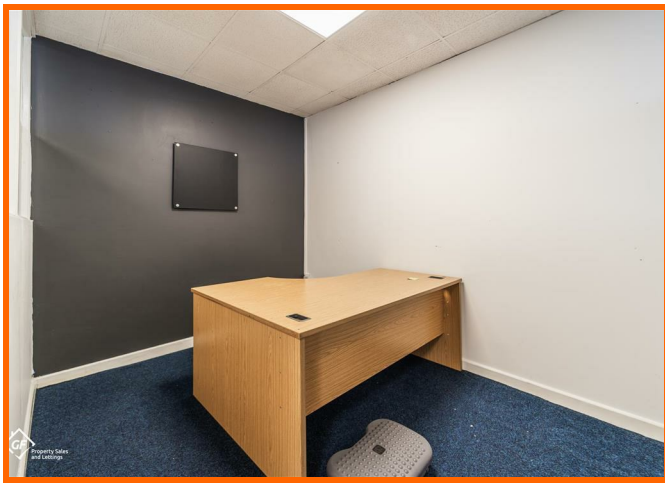
Reception Room Seven

9.14m x 5.79m (30' x 19')

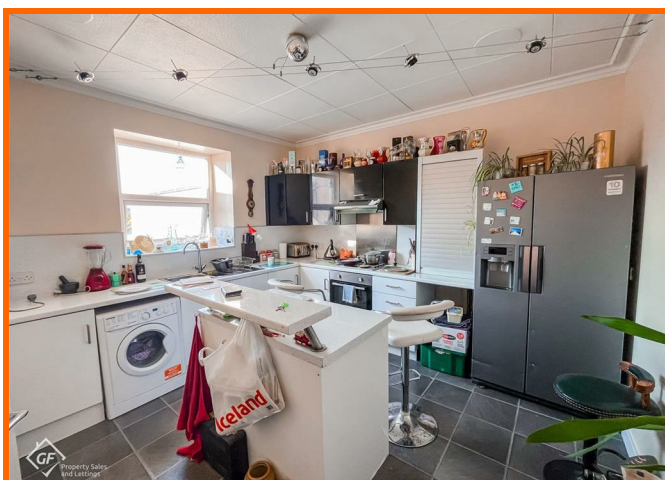
Single glazed hardwood windows, smoke alarm, integrated ceiling speakers and doors to two reception rooms and landing.



233 Marine Road Central, Morecambe, LA4 4BQ



233 Marine Road Central, Morecambe, LA4 4BQ



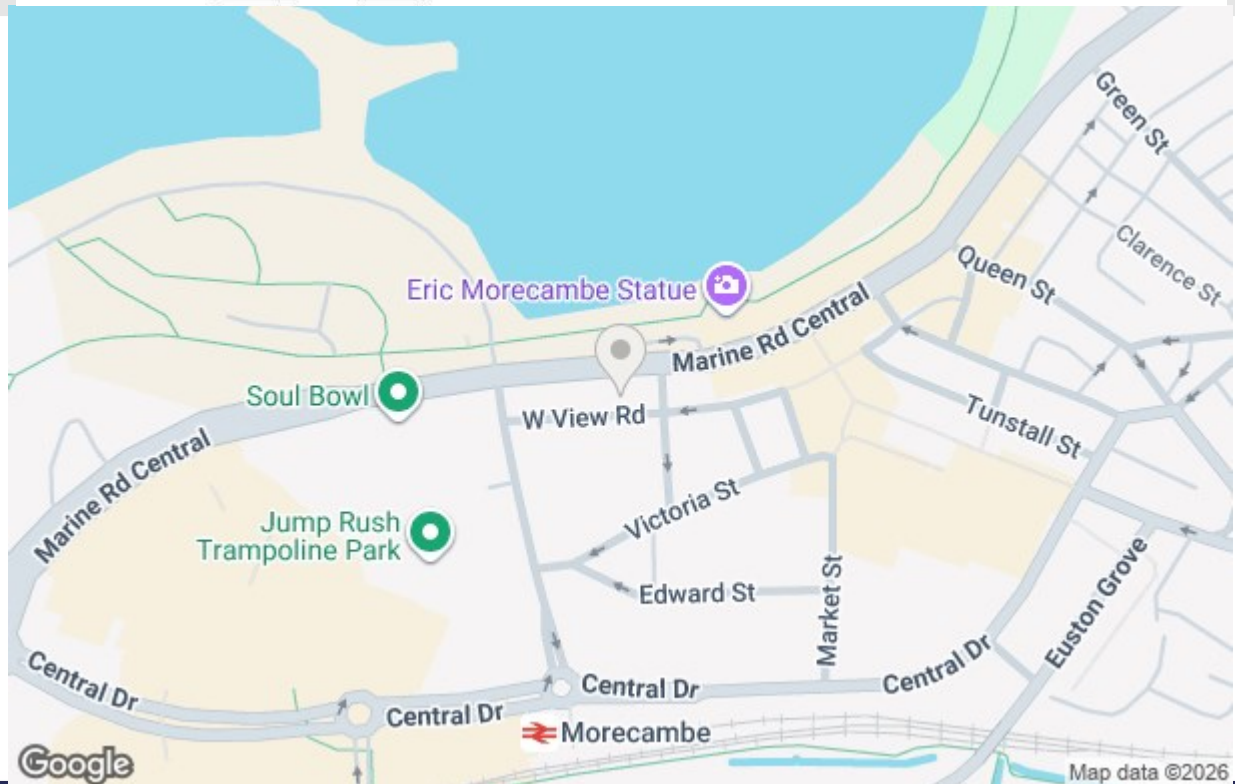
Get in touch today

01524 401402

info@gfproperty.co.uk

gfproperty.co.uk

Take a nosey round



Get in touch today

01524 401402
info@gfproperty.co.uk
gfproperty.co.uk

Energy Efficiency Rating	
Current	Potential
Very energy efficient - lower running costs	
(92 plus) A	
(81-91) B	
(65-80) C	
(55-64) D	
(39-54) E	
(21-38) F	
(1-20) G	
Not energy efficient - higher running costs	
England & Wales	
EU Directive 2002/91/EC	

Environmental Impact (CO ₂) Rating	
Current	Potential
Very environmentally friendly - lower CO ₂ emissions	
(92 plus) A	
(81-91) B	
(65-80) C	
(55-64) D	
(39-54) E	
(21-38) F	
(1-20) G	
Not environmentally friendly - higher CO ₂ emissions	
England & Wales	
EU Directive 2002/91/EC	